

# MUD, SWEAT N' GEARS

**LōDril**<sup>®</sup> TR | LAD  
DH | TRt

**BAY SHORE**<sup>®</sup>  
SYSTEMS, INC.





# THERE'S NO SUCH THING AS AN "AVERAGE JOB."

That's why we build to **YOUR JOB.**

**YOUR SITUATION. YOUR TIMEFRAME.**

Over the past four decades we have been known for our philosophy that there's no average project in the geotechnical & piling foundation industry. We custom build tough, reliable equipment for specialty contractors in sectors like:

- Drilled Shafts
- Auger Cast / CFA
- Dewatering
- Driven Piling
- Earth Retention / Powerline
- Excavation / Landscaping
- GC Civil / Commercial / Industrial
- Geopier
- Limited Access
- Marine
- Oil & Gas
- Public Utility
- Rail
- Rental House
- Reseller
- Residential
- Signal / Signs
- Sound Wall
- Specialty Subcontractor
- Utility
- Wind

TR Series	2
LAD Series	8
DH Series	12
TRt Series	18
About Us	24

TR SERIES

TR50



323

 **BAY SHORE**<sup>®</sup>  
SYSTEMS, INC.

**LōDril**<sup>®</sup>

TR	LAD
DH	TRt

**YOU ASKED, WE LISTENED.  
OUR **TR SERIES** DRILL RIGS  
BRING MORE TORQUE AND LIGHTER  
TRANSPORTATION TO YOUR JOB SITE,  
WITH A SINGLE TRUCK HAUL.**

**YOUR DRILL RIG, YOUR WAY.** A powerful drill rig wheeled or tracked, expandable undercarriage or fixed, short or long reach, the list goes on. Whether it is the newest electric over hydraulic or the traditional piloted system. Short mast for low-overhead, taller mast for deeper drill depths all-in-one drill rig. Flexibility to work with the excavator brand of your choice.

*“Our new TR Rig is the perfect combination of power and versatility. Transport and setup is efficient and economical. Paired with Bay Shore’s immediate and always-available technical support, it’s tough to beat.”*

- Andy Shorten, Greg Bair Track Hoe Service

**POWERFUL  
DRILLING DEPTHS  
UP TO 100 FEET  
(30 METERS)  
PLUS LARGE  
DRILLING  
DIAMETERS UP  
TO 20 FEET  
(6 METERS)**

# FIND THE **TR SERIES** RIG THAT'S RIGHT FOR YOU

TR SERIES SPECS	Units	TR25	TR50	TR60	TR95	TR110	TR150	TR200
Rotary Torque (max)	ft-lbs kN-m	25,000 35	50,000 70	65,000 90	98,000 130	120,000 160	150,000 200	200,000 270
Kelly Winch Line Pull (first layer, max)	lbs kN	18,000 80	18,000 80	25,000 111	25,000 111	30,000 130	40,000 180	40,000 180
Hole Diameter (max, recommended) <sup>1</sup>	in mm	48 1,200	96 2,400	108 2,700	132 3,300	144 3,600	168 4,200	168 4,200
Hole Diameter (min) <sup>2</sup>	in mm	18 450	18 450	18 450	18 450	18 450	18 450	18 450
Drill Speed Range (LHS) <sup>3</sup>	RPM	40/80/140*	30/60/100	30/60/100	30/60/100	30/60/100	30/60/100	30/60/100
Crowd Stroke	in	60 96 72 140	72 140 96 168	96 168 140 200	140 200 168 250	168 228	168 228	168 228
	mm	1,500 2,400 1,800 3,600	1,800 3,600 2,400 4,300	2,400 4,300 3,600 5,000	3,600 5,100 4,300 6,400	4,300 5,800	4,300 5,800	4,300 5,800
Hole Depth (max) <sup>2</sup>	ft m	80 24	80 24	80 24	100** 30**	100** 30**	100** 30**	100** 30**
Attachment Height <sup>2</sup>	ft m	11-18 3-5	12-20 4-6	15-24 5-7	15-28 5-9	22-27 7-8	23-27 7-8	25-30 8-9
Excavator Weight Class (x 1,000) <sup>3</sup>	lbs kg	35-50 15-25	40-65 18-30	50-95 25-45	65-95 30-45	75-100 35-45	100 45	100-145 45-65
Square Kelly Bars Includes	N/A	Dewatering holes, locking pins & chains						
Kelly Elements - Square (max)	qty	8	6	6	5	5	4	5
Round Locking Kelly Bars Includes	N/A	Dewatering holes & retention chains						
Kelly Elements - RLK (max)	qty	5	5	5	4	4	4	4
*With upgrade		1 - Dependent on ground conditions, tooling and operation			3 - Excavator modifications may be required or anticipated			
**Deeper depths are available, contact your sales representative for more information		2 - Dependent on configuration						

## TR SERIES Possibilities:

- Kelly bars round locking, square friction or both.
- High capacity on the kelly winch, improving productivity and faster cycle time.
- Single and multi-layer winch capabilities.
- Boom modification and removable counterweight for reach, access plus stability.

- Reaction jack for maximizing effective crowd force while maintaining compact footprint.
- The list goes on...

**Need more solutions? We'll custom engineer the right rig for you.**

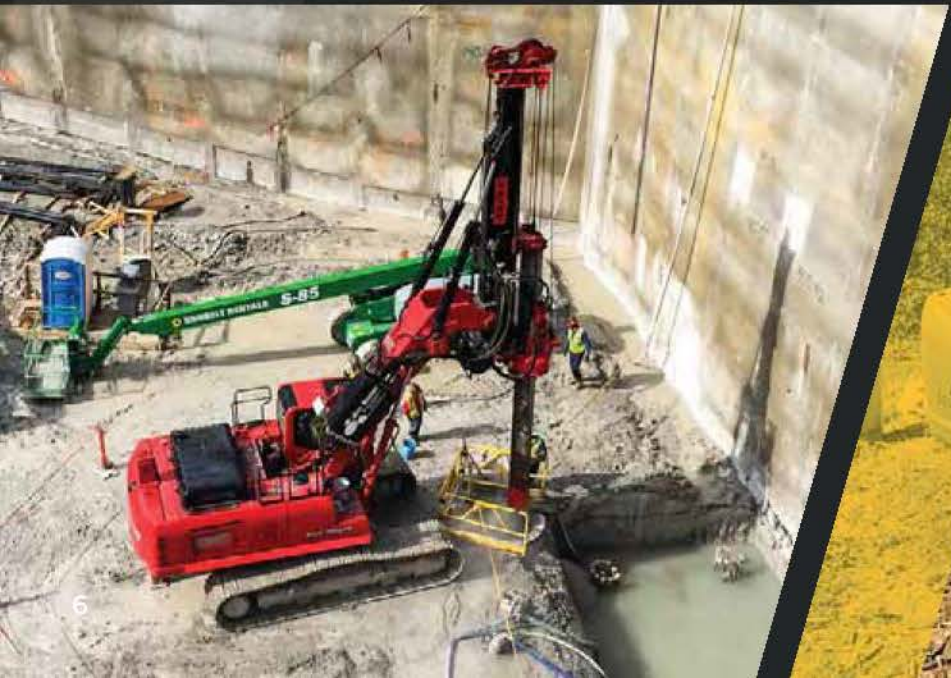
**LōDril**® TR | LAD  
DH | TRt



 **BAY SHORE**®  
SYSTEMS, INC.



# TR SERIES





# LōDril®

TR	LAD
DH	TRt



# LAD SERIES



**BAY SHORE**<sup>®</sup>  
SYSTEMS, INC.

## THE **LAD SERIES** DRILLS GET YOU INTO TIGHT SPOTS— AND OUT AGAIN.

The LAD (Limited Access Drill) Series was specially designed to bring deep-drilling capabilities to severely restricted-access jobs.

With attachment heights as short as 6.5 feet (2 meters), these small rigs can drill to depths of 70 feet (21 meters) with a wide torque range allowing you to make quick work of tough soil conditions.

The LAD Series' drilling speeds crush the competition's, maintaining high torque ratings at higher drill speeds, significantly increasing your daily production. Compared with some other limited-access drills on the market, the LAD Series beats them on rotary torque and headroom clearance, opening up more lines of business and ways to increase revenue.

**DRILL SPEEDS  
UP TO 60 RPM,  
PLUS DRILLING  
DEPTHS OF  
UP TO 60 FEET  
(18 METERS)**

***“We’ve put the LAD in the tightest spaces and through the most treacherous terrain possible to meet our customers’ needs. Regardless of the size of the hole, this rig has come out on top every time and proven itself to be the most widely used and profitable rig we own.”***

- Mike Duffey, Kindness General Contractors, Inc.

# FIND THE **LAD SERIES** RIG THAT'S RIGHT FOR YOU

LAD SERIES SPECS	Units	LAD80	LAD140	LAD250	LAD400
Rotary Torque (max)	ft-lbs kN-m	8,000 10	14,200 20	27,000 40	40,000 50
Kelly Winch Line Pull (first layer, max)	lbs kN	5,000 (PL5) 22	8,000 (M8) 36	12,000 (M12) 53	18,000 (M18) 80
Hole Diameter (max, recommended) <sup>1</sup>	in mm	36 900	48 1,200	48 1,200	60 1,500
Hole Diameter (min) <sup>2</sup>	in mm	20 500	20 500	24 600	24 600
Drill Speed Range (LHS)	RPM	30/60/100	30/60/100	30/60/100	30/60/100
Crowd Stroke	in mm	21 500	20 500    28 700	30 800    36 900	30 800    36 900
Hole Depth (max) <sup>2</sup>	ft m	40 12	60 18	60 18	60 18
Attachment Height <sup>2</sup>	ft m	6.5 2	8 (20" crowd)   9 (28" crowd) 2.4-2.7	10 (30" crowd)   11 (36" crowd) 3.0-3.4	
Excavator Weight Class (x 1,000) <sup>3</sup>	lbs kg	11-20 5-9	15-24 7-11	20-24 9-11	30-44 14-20
Square Kelly Bars Includes	N/A	Dewatering holes, locking pins & chains			
Kelly Elements - Square (max)	qty	11	9	8	7
Round Locking Kelly Bars Includes	N/A	Dewatering holes & retention chains			
Kelly Elements - RLK (max)	qty	Upon Request	Upon Request	7	6

1 - Dependent on ground conditions, tooling and operation    2 - Dependent on configuration    3 - Excavator modifications may be required or anticipated

## LAD SERIES Possibilities:

- Specialized for the tightest challenging projects.
- High torque in a compact package.
- Kelly bars round locking, square friction or both, with high element count for deeper drill depths.
- High capacity on the kelly winch, improving productivity and faster cycle time.
- Add a custom boom on zero tail swing machines to provide great stability and access.
- The list goes on...

**Need more solutions? We'll custom engineer the right rig for you.**

# LōDril®

TR	LAD
DH	TRt



**DH SERIES**



**BAY SHORE<sup>®</sup>**  
**SYSTEMS, INC.**

**LōDril**<sup>®</sup> TR | LAD  
DH | TRt

## THE **DH SERIES** GETS YOU THE JOBS YOUR COMPETITORS CAN'T HANDLE.

The DH Series is a versatile, powerful excavator-mounted foundation drill for traditional and extreme jobs.

Its telescoping Kelly bars allow you to drill to depths of 90 feet (27 meters) under severe overhead restrictions with a very low profile attachment—even in the most unfriendly conditions.

We'll build your DH Series to the specific requirements of your job—but it'll take you far beyond that. We've built more than 600, and most of them are still in use today, including the first one built in 1991. Whether you purchase a new excavator or mount it on an existing one in your fleet, your DH Series will be engineered for the base machine that makes the most sense for you.

**HYDRAULIC  
TORQUE UP  
TO 65,000 FT-LBS  
(95 KN-M) PLUS  
DRILLING DEPTHS  
OF UP TO  
100 FEET  
(30 METERS)**

*"I love running the DH more than any of our other drills because of the versatility and ease of use. Great product!"*

- Robert Hovaris, Operator

# FIND THE **DH SERIES** RIG THAT'S RIGHT FOR YOU

DH SERIES SPECS	Units	DH15		DH20		DH40		DH60			
Rotary Torque (max) <sup>1</sup>	ft-lbs kN-m	15,000 20		21,500 30		43,000 60		65,000 90			
Kelly Winch Line Pull (first layer, max)	lbs kN	8,000 35		12,000 53		18,000 80		25,000* 110			
Hole Diameter (max, recommended) <sup>2</sup>	in mm	36 900		48 1,200		84 2,100		108 2,700			
Hole Diameter (min) <sup>1</sup>	in mm	18 450		18 450		18 450		18 450			
Drill Speed Range (LHS) <sup>3</sup>	RPM	30/60/100		30/60/100		40/80/140*		30/60/100			
Crowd Stroke	in mm	24 600	36 900	24 600	36 900	48 1,200	66 1,700	24 600	36 900	48 1,200	66 1,700
Hole Depth (max) <sup>4</sup>	ft m	80 24		80 24		100** 30**		100** 30**			
Attachment Height <sup>4</sup>	ft m	9-21 3-6		10-21 3-6		14-26 4-8		17-32 5-10			
Excavator Weight Class (x 1,000) <sup>5</sup>	lbs kg	16-35 7-15		35-50 15-20		50-65 20-30		70-95 30-40			
Square Kelly Bars Includes	N/A	Dewatering holes, locking pins & chains									
Kelly Elements - Square (max)	qty	7		7		6		6			
Round Locking Kelly Bars Includes	N/A	Dewatering holes & retention chains									
Kelly Elements - RLK (max)	qty	5		5		5		5			
*With upgrade		1 - Running torque at low drill speed				4 - DH Series configuration specific					
**Deeper depths are available, contact your sales representative for more information		2 - Dependent on ground conditions, tooling and operation				5 - Excavator modifications may be required					
		3 - Dependent on excavator									

## DH SERIES Possibilities:

- Long-standing technology.
- Outstanding track record.
- Fastest bar set changes in the industry.
- The legacy continues...

The cornerstone of the LōDril® foundation.



**LōDril**<sup>®</sup> TR | LAD  
DH | TRt



 **BAY SHORE**<sup>®</sup>  
SYSTEMS, INC.



# DH SERIES



# LōDril®

TR	LAD
DH	TRt



# TRT SERIES



**BAY SHORE**<sup>®</sup>  
SYSTEMS, INC.

5°  
AFT TILT

**LōDril**<sup>®</sup> TR | LAD  
DH | TRt

# THE **TRt** SERIES DRILL RIGS BRING POWER, DEPTH AND MORE FLEXIBILITY TO YOUR FLEET.

Drive up and drill deep with the TRt Series truck-mounted drill rig. All the capabilities of the best-selling TR Series and the mobility of a truck.

Tap the horsepower of the truck's main engine vs. an upstairs engine to reduce environmental impact, reduce hearing loss and cost associated with running a second engine, and improve communication safety. Engineered for high performance, faster setup and simplified transport from hole-to-hole and site-to-site. Ergonomic and intuitive controls lead to a safer work environment. Flexibility to work with the truck brand of your choice with customized hydraulic solutions.

**HYDRAULIC  
TORQUE UP TO  
AN UNSTOPPABLE  
98,000 FT-LBS  
(133 kN-M)  
PLUS DRILLING  
DEPTHS OF UP  
TO 80 FEET  
(24 METERS)**

28'-5"  
WORKING  
HEIGHT

*"I just purchased a TRt50 Truck Rig. Having a truck-mounted drill rig in my fleet will greatly add to my drilling capability, and I know I can count on Bay Shore Systems to stand beside me and their equipment."*

- Steve Usherwood, Southwest Concrete Construction

7'  
UNDER  
STUB



# FIND THE TRt SERIES RIG THAT'S RIGHT FOR YOU

TRt SERIES SPECS	Units	TRt25				TRt50				TRt95			
Rotary Torque (max)	ft-lbs kN-m	25,000 35				50,000 70				98,000 130			
Kelly Winch Line Pull (first layer, max)	lbs   kN	12,000	53			18,000	80			25,000	111		
Hole Diameter (max, recommended) <sup>1</sup>	in   mm	48	1,200			72	1,800			96	2,400		
Hole Diameter (min)	in   mm	18	450			18	450			18	450		
Drill Speed Range*	RPM	30/60/100				30/60/100				30/60/100			
Crowd Stroke	in mm	72 1,800	96 2,400	125 3,200	140 3,600	72 1,800	96 2,400	140 3,600	168 4,300	84 2,100	140 3,600	168 4,300	228 5,800
Hole Depth (max) <sup>2</sup>	ft   m	80	24			80	24			80	24		
Standard Mast - Drill Height Range	ft   m	12-18	4-6			12-20	4-6			15-28	5-9		
Side Tilt	N/A	+/- 10 deg				+/- 7 deg				+/- 7 deg			
Fore/Aft Tilt	N/A	10 deg aft				10 deg aft				10 deg aft			
Standard Slide - Scope	in   mm	24	610			36	910			48	1,200		
Standard Stub Clearance	ft   m	6	1.8			7	2.1			7	2.1		
Square Kelly Bars Includes	N/A	Dewatering holes, locking pins & chains											
Kelly Elements - Square (max)	qty	8				6				5			
Round Locking Kelly Bars Includes	N/A	Dewatering holes & retention chains											
Kelly Elements - RLK (max)	qty	5				5				4			

\*With upgrade 1 - Dependent on ground conditions, tooling and operation 2 - Dependent on configuration

## TRt SERIES Possibilities:

- Kelly bars round locking, square friction or both.
- High capacity on the kelly winch, improving productivity and faster cycle time.
- Single and multi-layer winch capabilities.
- Water tank options, hose reels and under body tool boxes to help meet the job site requirements.
- Operator station cab with climate control capabilities to keep you out of the elements and comfortable.
- The list goes on...

**Need more solutions? We'll custom engineer the right rig for you.**

**LoDrill**<sup>®</sup> TR | LAD  
DH | TRt



**BAY SHORE**<sup>®</sup>  
SYSTEMS, INC.



# TRt SERIES





# LōDril®

TR | LAD  
DH | TRt





**BAY SHORE<sup>®</sup>**  
**SYSTEMS, INC.**

# IT ALL STARTS WITH THE FOUNDATION

In 1978, Bay Shore Systems started as a North American, family-owned manufacturer of foundation drilling equipment. Based in the San Francisco Bay Area, incumbent earthquakes, cliffs, and rough soil conditions are commonplace, necessitating the creation of the LōDril® system seen drilling under bridges, underground parking garages and off cliffs (don't get us started).

In 1996, Bay Shore Systems moved its headquarters to Rathdrum, Idaho, USA, near the world-renown Coeur d'Alene area with its rich heritage and Native American influences. Recently, Bay Shore Systems set up a second manufacturing facility in London, Kentucky, USA, which fulfills rig order builds generated on the eastern side of the United States.

With a rich culture of employee engagement, passion for mud, sweat, and gears, Bay Shore Systems scouts new install facilities around the globe.

## 24/7 SERVICE

If there's a problem, our industry-leading service team will help you fix it, 24 hours a day. We're proud of the fact that 95% of all service issues are resolved within 24 hours. Plus, your Product Support Sales Representative is dedicated to making your equipment run as profitably for you as possible by helping you make the right maintenance and service decisions.

UPWARDS OF

# 99%

OF OUR DRILLS ARE STILL IN USE TODAY

# 95%

OF SERVICE ISSUES ARE RESOLVED WITHIN 24 HOURS



[BAYSHORESISTEMS.COM](http://BAYSHORESISTEMS.COM)



**BAY SHORE<sup>®</sup>**  
**SYSTEMS, INC.**

**GIVE US A CALL**

Toll Free | 888.569.3745  
Rathdrum, ID | 208.687.3311  
London, KY | 888.569.3745  
Fax | 208.687.4153  
New Zealand/Australia | +61 8 7200 0725

**24/7 SERVICE**

Toll Free | 888.569.3745  
Local | 208.687.3311  
After Hours | 208.446.4691

**SEND US AN EMAIL**

Sales | [sales@bayshoresystems.com](mailto:sales@bayshoresystems.com)  
Customer Service | [service@bayshoresystems.com](mailto:service@bayshoresystems.com)

**STOP BY FOR A VISIT**

14206 N. Ohio Street | Rathdrum, ID 83858  
820 Whitley Street | London, KY 40741

**BAYSHORESYSTEMS.COM**

**USA**

Rathdrum, ID (HQ) | London, KY (Facility)  
San Francisco, CA | Chicago, IL | Daytona, FL | Fort Worth, TX

**INTERNATIONAL**

Canada | Europe | Australia | New Zealand | Southeast Asia